

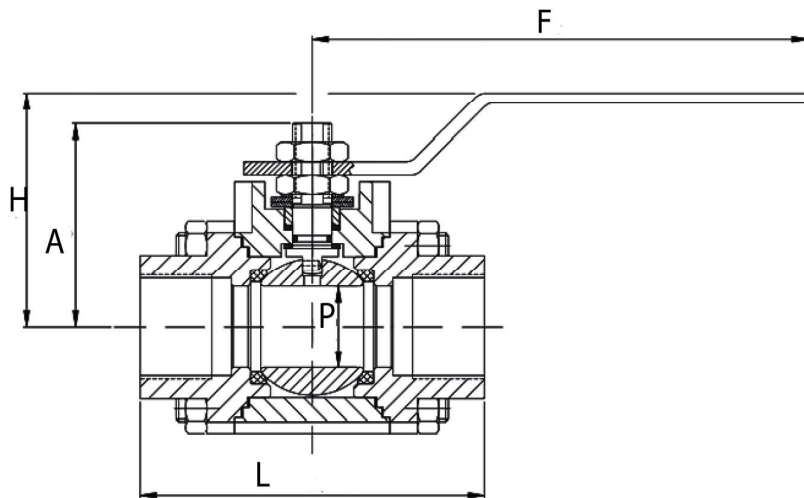


BALL VALVES - 3 PIECE BALL VALVES - 150# & 800#

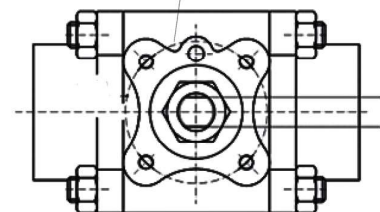
Socket weld / Threaded Ends



FLOWTORQ make 3 Piece design Ball Valves comes in cast three piece body in screwed, socket weld & threaded types. A main body houses ball and stem and the 2 side pieces or adaptors house 1 seat each. Ideal in tight shut off applications from low pressures to high and very high pressure as well. These are preferred in heavy and bulky high pressure applications primarily. These ball valves are also designed and manufactured with extended stem for hot and cold cryogenic applications. 3 piece ball valves are designed and manufactured in smaller to higher sizes and are expensive as compared to 1 & 2 piece design for similar size and class variants.



Mounting as per ISO 5211



150#					
Size (P)		L	H	F	Weight (kg)
IN.	MM				
1/2"	15	90	58	155	3.5
3/4"	20	95	70	160	4.5
1"	25	100	44	160	5
1.1/2"	40	120	44	178	6
2"	50	130	46	178	10

(Code - PV)

800#					
Size (P)		L	H	F	Weight (kg)
IN.	MM				
1/2"	15	68	43	115	4
3/4"	20	79	54	122	5
1"	25	95	68	153	6
1.1/2"	40	117	98	178	7
2"	50	130	122	178	11

(Code - PV)

Design and Manufacturing Standard	BS5351, API602
Testing Standard	API598
Face to Face Standard	ANSI B 16.11, Mnfr's Std.
End Connections	BSP, BSPT, NPT, Socket Weld